

WAVLINK®

Quick Installation Guide

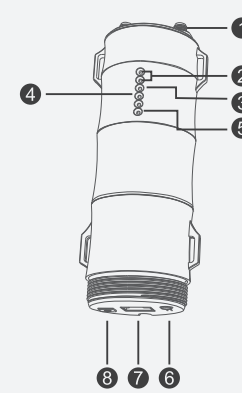


High Power Wi-Fi Outdoor AP/Repeater
 Model: WL-WN570HA1 AC800
 Model: WL-WN570H2 N300

REV E3

Hardware Overview

Primary Extender



- RP-SMA Antenna Connectors
- 3 x Wi-Fi Signal LEDs
- Wi-Fi LED
- WAN/LAN LED
- POWER LED
- Reset button
- WAN/LAN Port (POE)
- Grounding Terminal

WL-WN570HA1
 2.4G SSID: WAVLINK-N
 5GHz SSID: WAVLINK-AC
 Wireless Key: no

WL-WN570H2
 2.4G SSID: WAVLINK-N
 Wireless Key: no

Default Parameters
 Web: <http://wifi.wavlink.com>
 Default IP: 192.168.10.1
 Login Password: admin

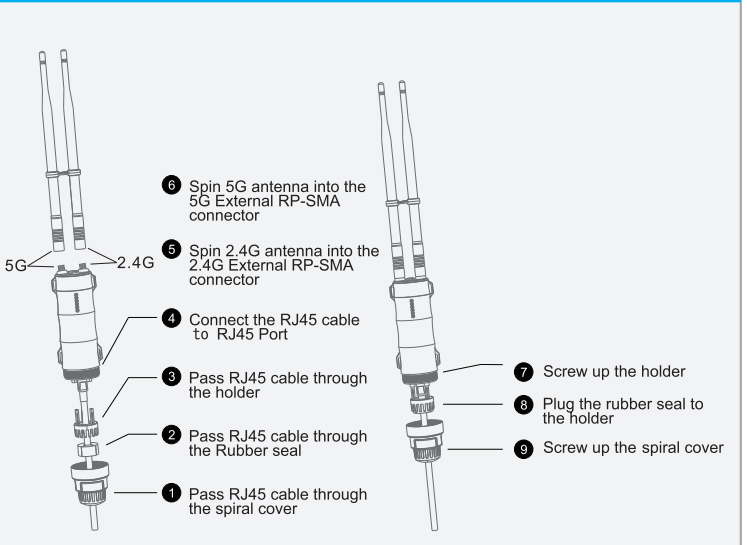
LED Indicators

POWER	ON: The Device is powered on OFF: The Device is not receiving electrical power.
LAN/WAN	ON: The Ethernet port is connected. OFF: The Ethernet port is disconnected. Flashing: Transferring data to/from a network device

Wi-Fi Signal

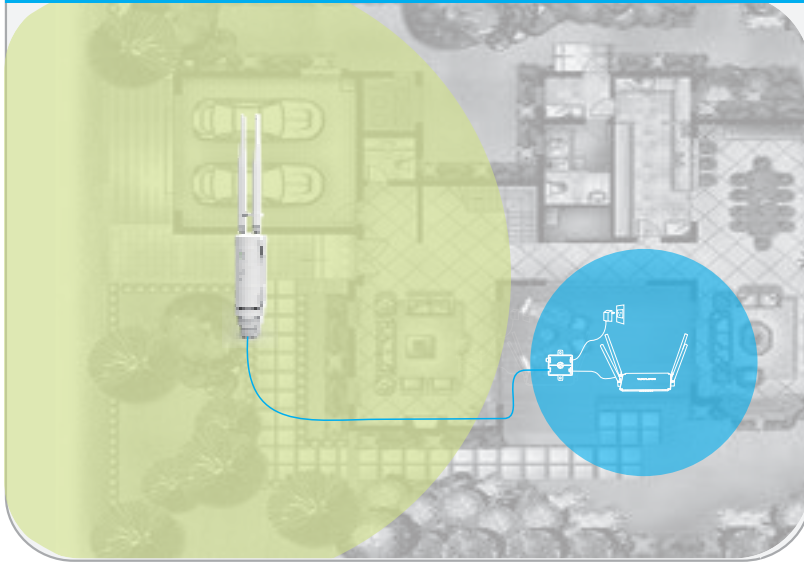
Mode	==	==	==	Description
AP/Router	ON	ON	ON	Wi-Fi Signal output power 100%
	ON	ON	ON	Better reception: signal strength 75% to 100%
Repeater WISP	ON	ON	OFF	Good reception: signal strength 50% to 75%
	ON	OFF	OFF	Weak reception: signal strength below 50%
	Flashing	OFF	OFF	Disconnected

Assembly



OPTION ONE LAN to Wi-Fi Extension Quick Setup

Recommend for big yard



Installation

A3. Connect one end of an Ethernet cable to "POE" port of POE converter.

A4. Connect one end of an Ethernet cable to "LAN DATA IN" port of POE converter, and connect the other end to a "LAN" port of your Router.

A5. Plug in the power connector to the "DC24V" port of POE converter, then plug the power adapter into an electrical outlet.

A6. Push the "ON/OFF" button on the POE converter to power on.

ATTENTION:
 1. Make sure to use a certified CAT5e/CAT6 Ethernet cable with RJ45 connectors.
 2. Make sure the length of the Ethernet cable is less than 60 meters (196 ft.).

Support passive POE power supply via Ethernet cable.

A1. Fasten the main body holder
 A2. Plug in the Device

A7. Connect to the Device

For Windows User

- Unplug the Ethernet cable from your computer (if any).
- Click the Wireless Network Connection icon on your taskbar.
- Click the refresh icon and connect to the Device's network: **WAVLINK-N** or **WAVLINK-AC**.

For Mac OS X User

- Unplug the Ethernet cable from your computer (if any).
- Click the Wi-Fi icon in the top right corner of the screen, and connect to the Device's network: **WAVLINK-N** or **WAVLINK-AC**.

Configuration

A8. Launch a web browser and type <http://wifi.wavlink.com> in the address field. Enter **admin** (all lowercase) to login.

A9. Click "Wizard".

A10. Click "AP (LAN Bridge)".

A11. Choose a Security Type.

A12. Enter your password for your extended network.

Note: Some router might not compatible with WL-WN570HA1. If it doesn't work, please:
 a. Click the icon at **Static IP** column to **ON**.
 b. Enter the info correspondingly.
 c. Try again.

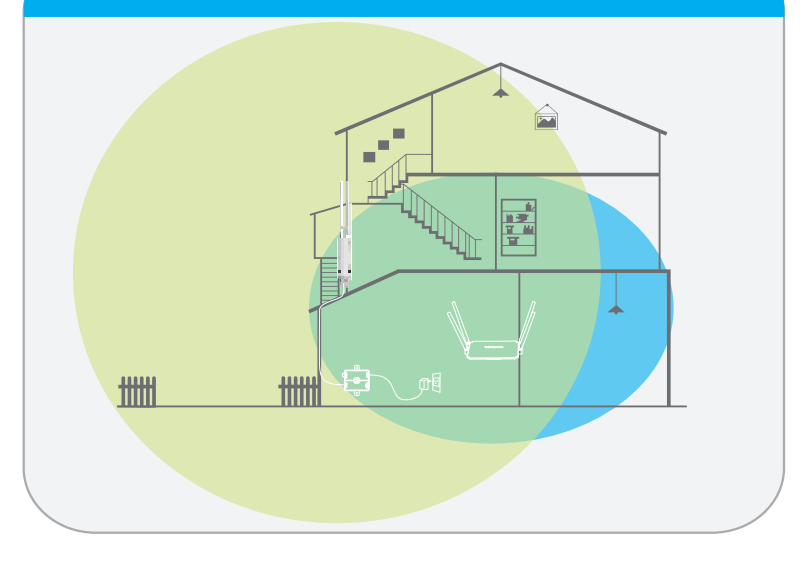
Change Login Password

NOTE: The default login password of the Device is "admin". We strongly recommend you change the default login password.

- Launch a web browser and type <http://wifi.wavlink.com> in the address field. Enter **admin** (all lowercase) to login.
 If the login window does not pop up, please refer to the FAQ>Q1.
- Click "Setup->Login Password".
- Enter the old password, then enter the new password and click "Apply".

OPTION TWO Wi-Fi to Wi-Fi Extension Quick Setup

Recommend for midsize yard



Configuration

B1. Installation
 Please refer to **OPTION ONE**.
 A1, A2, A3, A5, A6

B2. Connect to the Device
 Please refer to **OPTION ONE** A7.

B3. Click "Wizard".

B4. Click "Repeater".

B5. Select your router's Wi-Fi SSID(s) and enter the password(s). Either keep the same SSID(s) as your host Wi-Fi or create new name(s) for the extended network(s).

B6. Verify your wireless settings and click "Connect".
 The Wi-Fi Signal LEDs should turn on and stay solid, indicating successful connections.

Firmware Upgrade

Firmware upgrade can fix bugs of the Device. However, we **DO NOT** recommend you upgrade the firmware of the Device if it works normally.

- Download the latest firmware file for the Device from our Website www.wavlink.com.
- Click "Setup->Upgrade Firmware".
- Click "Browse" to locate the download new firmware file.
- Click "Apply" button, and wait a few minutes to the firmware upgrade to be complete.

Warranty voids if you interrupted the upgrade procedure.

NOTE: Never interrupt the upgrade procedure by closing the web browser or physically disconnect your computer from the Device. If the procedure is interrupted, the firmware upgrade will fail, and you may have to return the Device to the dealer to ask for help.

B7. Relocate

- Plug the Device into an electrical outlet between your router (Host Wi-Fi) and the Wi-Fi dead zone.
- Wait until the Wi-Fi Signal LEDs is ON. If the signal is weak, relocate the Device closer to your router for better Wi-Fi signal.

Host Network → **Extended Network**

Ideal Location (Wi-Fi Signal 2 x LEDs or 3 x LEDs are ON)
Too Far Away (Wi-Fi Signal 1 x LED is ON or Flashing)

Tips: Use your phone to find the ideal location for the Device. If your phone's Wi-Fi signal (received from your router) is higher than 3 levels, it is the ideal spot to install the Device. If not, we recommend you move it closer to your router for better Wi-Fi signal.

Change Login Password

NOTE: The default login password of the Device is "admin". We strongly recommend you change the default login password.

- Launch a web browser and type <http://wifi.wavlink.com> in the address field. Enter **admin** (all lowercase) to login.
 If the login window does not pop up, please refer to the FAQ>Q1.
- Click "Setup->Login Password".
- Enter the old password, then enter the new password and click "Apply".

FAQ (Frequently Asked Questions)

- Q1. Why doesn't the login page appear after entering <http://wifi.wavlink.com> ?**
- If your computer is wirelessly connected, please verify that you have connected to the device's SSID. If your computer is connected via an Ethernet cable, please verify that the connection is stable.
 - Make sure your computer is set to obtain an IP address automatically.
 - Use the IP address to log in to the page. The default IP is 192.168.10.1. If the Device is connected to the host Wi-Fi, please go to the router's DHCP client list to obtain the Device's current IP address.
 - Please reset the device and try again. If the problem still exists
- Q2. How do I restore the device to its factory default settings?**
- While the Device is powered on, press and hold the Reset button until all the LEDs turn on momentarily.
- Q3. What should I do if the LED does not change to solid after completing ?**
- You may have entered the incorrect Wi-Fi password of your host Wi-Fi during the configuration, please log into the Device's web-based interface to check the password and try again.
 - Reset the device and go through the configuration again.
- Q4. I have enabled a wireless MAC filter, wireless access control, or access control list (ACL) on my Router. What should I do before configuring and using the Device ?**
- If you have enabled those functions of your Router, you may need to disable them first. And then follow Method ONE or Method TWO to complete the configuration.
- For more details, please refer to www.wavlink.com.

The Best Location

Wi-Fi to Wi-Fi Extension

Please install the device as follows:

Picture with : Recommended Wi-Fi Signal 2 x LEDs or 3 x LEDs are ON

Picture with : Not Recommended Wi-Fi Signal 1 x LED is ON or Flashing, which could cause network disconnection or slow internet.

GNU General Public License Notice

This product includes software codes developed by third parties. These software codes are subject to either the GNU General Public License (GPL), Version 2, June 1991 or the GNU Lesser General Public License (LGPL), Version 2.1, February 1999.

You can copy, distribute, and/or modify in accordance with the terms and conditions of GPL or LGPL.

The source code should be complete, if you want us to provide any additional source code files under GNU General Public License (GPL), please contact us in these matters. We are committed to meeting the requirements of the GNU General Public License (GPL). You are welcome to contact us local office to get the corresponding software and licenses. Please inform us your contact details (full address) and the product code. We will send you a software package with the software and license for free.

The respective programs are distributed WITHOUT ANY WARRANTY, without even the implied warranty of MERCHANTABILITY or FITNESS FOR A PARTICULAR PURPOSE.

Please refer to the GNU General Public License Web site for further information.
<http://www.gnu.org/licenses/old-licenses/gpl-2.0.html>
<http://www.gnu.org/licenses/lgpl.html>

WEEE Directive & Product Disposal

At the end of its serviceable life, this product should not be treated as household or general waste. It should be handed over to the applicable collection point for the recycling of electrical and electronic equipment, or returned to the supplier for disposal.